

Public Hearing
Districtwide Redistricting

February 21, 2023

THE SCHOOL BOARD OF OSCEOLA COUNTY, FLORIDA

Guidelines for Establishing Redistricting Committees

SCHOOL COMMITTEES

A redistricting committee representing each school involved in the redistricting process shall be established by the School Advisory Council at each affected school.

Each school committee shall be broadly representative of the school community.

Each school committee shall be composed of five members, one of which shall be an administrator at the school. No more than one of the four remaining members of the committee shall be an employee of the School District of Osceola County.

DISTRICTWIDE COMMITTEE

There shall be a Districtwide Committee established. The structure of the committee shall be as follows:

1. Superintendent;
2. Deputy Superintendent of Human Services, or designee;
3. Assistant Superintendents for Elementary, Middle, and High School Curriculum & Instruction, or designees;
4. Assistant Superintendent for School Operations, or designee;
5. Chief Financial Officer for Business & Finance, or designee;
6. Chief Facilities Officer, or designee;
7. Director of Transportation, or designee; and
8. Designated Principals impacted by the redistricting process and their 5-member committees.

**THE SCHOOL BOARD
OF
OSCEOLA COUNTY, FLORIDA**

**Calendar for Establishing Attendance Zones
for Harmony High, St. Cloud High, and Tohopekaliga High Schools
for the 2023/2024 School Year**

01/2023 – 02/2023	Staff, Principals, and School Advisory Committees meet to discuss attendance zones for Harmony High, St. Cloud High, and Tohopekaliga High schools.
01/17/2023	School Board meets to set calendar, to adopt guidelines, and to determine if any additional schools will be considered for redistricting this year.
01/23/2023 02/06/2023	Districtwide Redistricting Committee meets to review data, determine additional needs, and to prepare preliminary plans. Meetings to be held at 6:00 P.M. at the Transportation Department, International Room, 401 Simpson Road, Kissimmee, FL.
01/20/2023 01/29/2023	Public Hearing Notice to Advertise
02/21/2023	Public Hearing to adopt high school attendance zone boundaries for the 2023/2024 school year to be held at 6:00 P.M. at the Administrative Complex, 817 Bill Beck Boulevard, Kissimmee, FL.
Note:	Additional meetings may be scheduled if necessary or scheduled meetings may be cancelled if they are not required. Dates are subject to change if additional meetings are scheduled or if scheduled meetings are cancelled.
	All proposed attendance zone boundaries can be viewed at each respective school or by visiting, www.osceolaschools.net and then following the steps provided: (1) Departments, (2) Planning Services, (3) Redistricting & School Zoning Information, (4) Redistricting, (5) Harmony High, St. Cloud High, and Tohopekaliga High School Redistricting

**THE SCHOOL BOARD
OF
OSCEOLA COUNTY, FLORIDA**

**Calendar for Establishing Attendance Zones
for Celebration High and Osceola High Schools
for the 2023/2024 School Year**

01/2023 – 02/2023	Staff, Principals, and School Advisory Committees meet to discuss attendance zones for Celebration High and Osceola High schools.
01/17/2023	School Board meets to set calendar, to adopt guidelines, and to determine if any additional schools will be considered for redistricting this year.
01/30/2023 02/13/2023	Districtwide Redistricting Committee meets to review data, determine additional needs, and to prepare preliminary plans. Meetings to be held at 6:00 P.M. at the Transportation Department, International Room, 401 Simpson Road, Kissimmee, FL.
01/20/2023 01/29/2023	Public Hearing Notice to Advertise
02/21/2023	Public Hearing to adopt high school attendance zone boundaries for the 2023/2024 school year to be held at 6:00 P.M. at the Administrative Complex, 817 Bill Beck Boulevard, Kissimmee, FL.
Note:	Additional meetings may be scheduled if necessary or scheduled meetings may be cancelled if they are not required. Dates are subject to change if additional meetings are scheduled or if scheduled meetings are cancelled.
	All proposed attendance zone boundaries can be viewed at each respective school or by visiting, www.osceolaschools.net and then following the steps provided: (1) Departments, (2) Planning Services, (3) Redistricting & School Zoning Information, (4) Redistricting, (5) Celebration High and Osceola High School Redistricting

**THE SCHOOL BOARD
OF
OSCEOLA COUNTY, FLORIDA**

**Calendar for Establishing Attendance Zones
for Hickory Tree Elementary and Narcoossee Elementary Schools
for the 2023/2024 School Year**

01/2023 – 02/2023	Staff, Principals, and School Advisory Committees meet to discuss attendance zones for Hickory Tree Elementary and Narcoossee Elementary schools.
01/17/2023	School Board meets to set calendar, to adopt guidelines, and to determine if any additional schools will be considered for redistricting this year.
01/25/2023 02/08/2023	Districtwide Redistricting Committee meets to review data, determine additional needs, and to prepare preliminary plans. Meetings to be held at 6:00 P.M. at the Transportation Department, International Room, 401 Simpson Road, Kissimmee, FL.
01/20/2023 01/29/2023	Public Hearing Notice to Advertise
02/21/2023	Public Hearing to adopt elementary school attendance zone boundaries for the 2023/2024 school year to be held at 6:00 P.M. at the Administrative Complex, 817 Bill Beck Boulevard, Kissimmee, FL.
Note:	Additional meetings may be scheduled if necessary or scheduled meetings may be cancelled if they are not required. Dates are subject to change if additional meetings are scheduled or if scheduled meetings are cancelled.
	All proposed attendance zone boundaries can be viewed at each respective school or by visiting, www.osceolaschools.net and then following the steps provided: (1) Departments, (2) Planning Services, (3) Redistricting & School Zoning Information, (4) Redistricting, (5) Hickory Tree Elementary and Narcoossee Elementary School Redistricting

**Proposals for Attendance Zones
for Elementary and High Schools
for the 2023/2024 School Year
Osceola District Schools**

In an attempt to balance school populations, seven existing schools serving the Kissimmee, and St. Cloud areas could be affected by redistricting changes.

Representatives (parents and staff) of the existing seven schools, along with district staff were involved in the preparation of the accompanying information.

The School Board of Osceola County will hold a Public Hearing and adopt a plan for attendance zones for the 2023/2024 School Year for the following schools:

Grades K-5: Hickory Tree Elementary and Narcoossee Elementary

**Grades 9-12: Celebration High, Harmony High, Osceola High,
St. Cloud High, and Tohopekaliga High**

The Public Hearing is as follows:

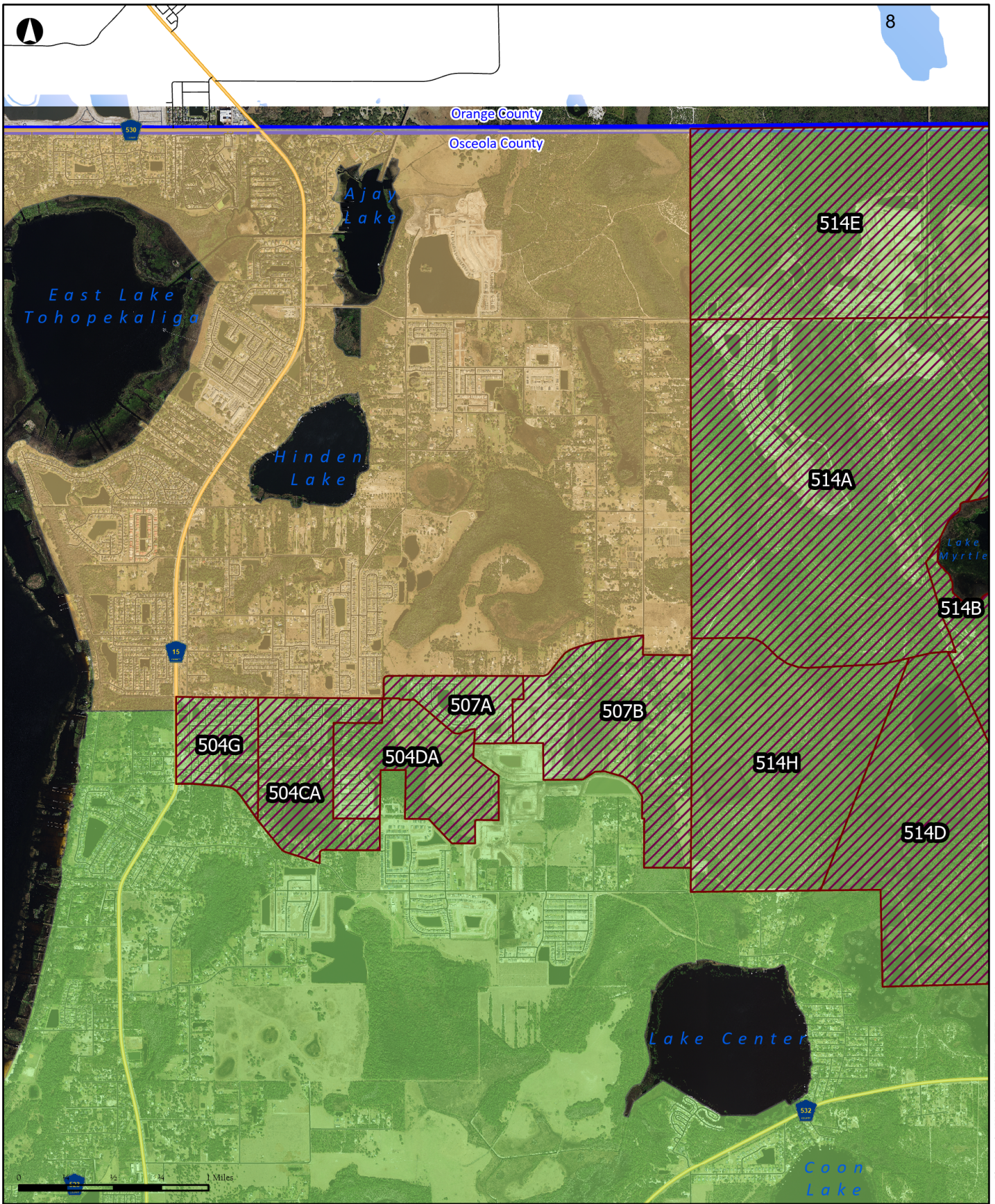
**Public Hearing 6:00 P.M.
February 21, 2023
Central Administrative Center
Board Room
817 Bill Beck Boulevard
Kissimmee, Florida 34741**

All proposed attendance zone boundaries can be viewed at each respective school or by visiting, www.osceolaschools.net and then following the steps provided: (1) Departments, (2) Planning Services, (3) Redistricting & School Zoning Information, (4) Redistricting, and (5) Hickory Tree Elementary, Narcoossee Elementary, Celebration High, Harmony High, Osceola High, St. Cloud High School, and Tohopekaliga High Redistricting.

Osceola Star: 01/20/2023

Orlando Sentinel: 01/29/2023

***2023/2024 and 2024/2025
Proposed Changes to Harmony
High, St. Cloud High, and
Tohopekaliga High Schools'
Attendance Zone Boundaries***



**Proposed Plan 2
Redistricting Area
HRHS to TKHS area zoom**

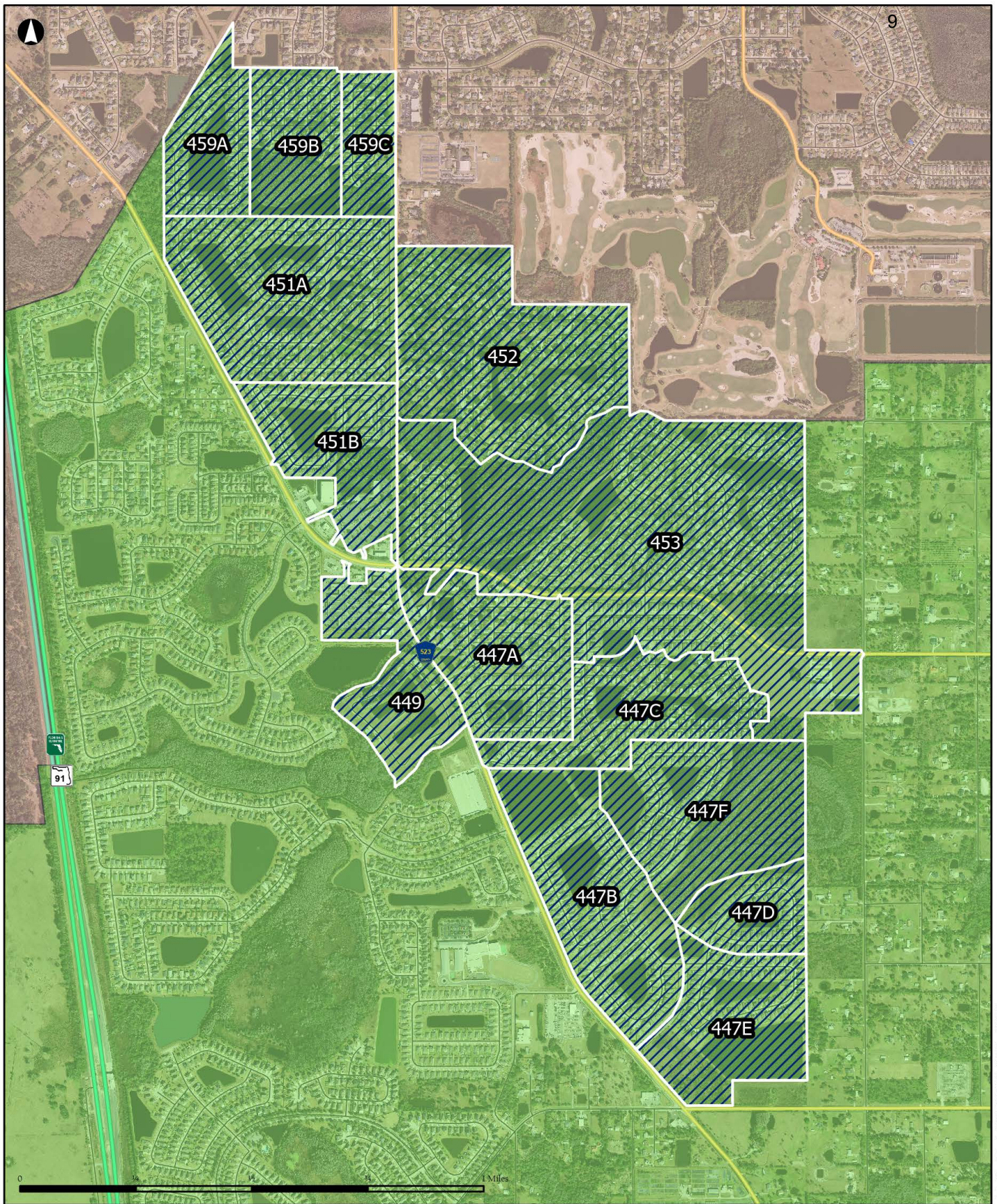
Draft redistricting proposed for SY2425



Planning Services Department
The School District of Osceola County, FL

- Harmony High
- Tohopekaliga High
- Draft_HRHStoTKHS

Disclaimer: All data, information, and maps are provided "as is" without any warranty or representation of accuracy, timeliness, or completeness. The School District of Osceola County, Florida (the "School District") cannot accept any responsibility for errors, omissions, or positional accuracy. The School District specifically disclaims any warranty, either express or implied, including, without limitation, the implied warranties of merchantability and fitness for a particular purpose. The burden of determining accuracy, timeliness, merchantability, and fitness for a particular use rests solely on the requestor, and the requestor assumes all risk as to quality and performance. In no event will the School District or its staff be liable for any direct, indirect, incidental, special, consequential, or other damages, including, without limitation, loss of profit, arising out of the use of the data, information, and maps even if the School District has been advised of the possibility of such damages. The requestor acknowledges and accepts the limitations of the data, information, and maps, including, without limitation, the fact that the data, information, and maps are dynamic and are in a constant state of maintenance, correction, and update.



**Proposed Redistricting Area
HRHS to SCHS area zoom**

Draft redistricting proposed for SY2425



Planning Services Department
The School District of Osceola County, FL

- Harmony High
- St. Cloud High
- Draft_HRHS to SCHS

Disclaimer: All data, information, and maps are provided "as is" without any warranty or representation of accuracy, timeliness, or completeness. The School District of Osceola County, Florida (the "School District") cannot accept any responsibility for errors, omissions, or positional accuracy. The School District specifically disclaims any warranty, either express or implied, including, without limitation, the implied warranties of merchantability and fitness for a particular purpose. The burden of determining accuracy, timeliness, merchantability, and fitness for a particular use rests solely on the requestor, and the requestor assumes all risk as to quality and performance. In no event will the School District or its staff be liable for any direct, indirect, incidental, special, consequential, or other damages, including, without limitation, loss of profit, arising out of the use of the data, information, and maps even if the School District has been advised of the possibility of such damages. The requestor acknowledges and accepts the limitations of the data, information, and maps, including, without limitation, the fact that the data, information, and maps are dynamic and are in a constant state of maintenance, correction, and update.

Alternate Plan

HRHS to TKHS and SCHS SY2324	School	Plan Area	Year	Grades 9-12	CHOICE Sending	CHOICE Receiving	NET TOTAL 9-12	Functional Capacity	Utilization	Functional Capacity W/ Relocatable	Functional Utilization W/ Relocatable
<i>SB Member: 5</i>	HRHS	10	2023/2024	3,530	629	148	3,049	2,781	110%	2,894	105%
	HRHS	10	2023/2024	3,180	567	148	2,761	2,781	99%	2,894	95%
	HRHS	10	2024/2025	3,085	580	148	2,653	2,781	95%	2,894	92%
	HRHS	10	2025/2026	3,364	594	148	2,918	2,781	105%	2,894	101%
<i>Nova HS to open (students moved TBD)</i>	HRHS	10	2026/2027	3,789	594	148	3,343	2,781	120%	2,894	115%
HRHS to TKHS SY2324	School	Plan Area	Year	Grades 9-12	CHOICE Sending	CHOICE Receiving	NET TOTAL 9-12	Functional Capacity	Utilization	Functional Capacity W/ Relocatable	Functional Utilization W/ Relocatable
<i>SB Member: 5</i>	TKHS	4	2023/2024	2,990	504	276	2,762	2,916	95%	2,916	95%
	TKHS	4	2023/2024	3,233	524	244	2,953	2,916	101%	2,916	101%
	TKHS	4	2024/2025	3,235	486	244	2,993	2,916	103%	2,916	103%
	TKHS	4	2025/2026	3,233	472	244	3,005	2,916	103%	2,916	103%
<i>Nova HS to open (students moved TBD)</i>	TKHS	4	2026/2027	3,267	472	244	3,039	2,916	104%	2,916	104%
HRHS to SCHS SY2425	School	Plan Area	Year	Grades 9-12	CHOICE Sending	CHOICE Receiving	NET TOTAL 9-12	Functional Capacity	Functional Utilization	Functional Capacity W/ Relocatable	Functional Utilization W/ Relocatable
<i>SB Member: 5</i> <i>Wing Addition +525 StuSta</i>	SCHS	9	2023/2024	2,075	234	489	2,330	2,086	112%	2,229	105%
	SCHS	9	2024/2025	2,037	215	489	2,311	2,585	89%	2,728	85%
	SCHS	9	2024/2025	2,512	257	442	2,697	2,585	104%	2,728	99%
	SCHS	9	2025/2026	2,445	230	442	2,657	2,585	103%	2,728	97%
<i>Nova HS to open (students moved TBD)</i>	SCHS	9	2026/2027	2,518	230	442	2,730	2,585	106%	2,728	100%

Notes:

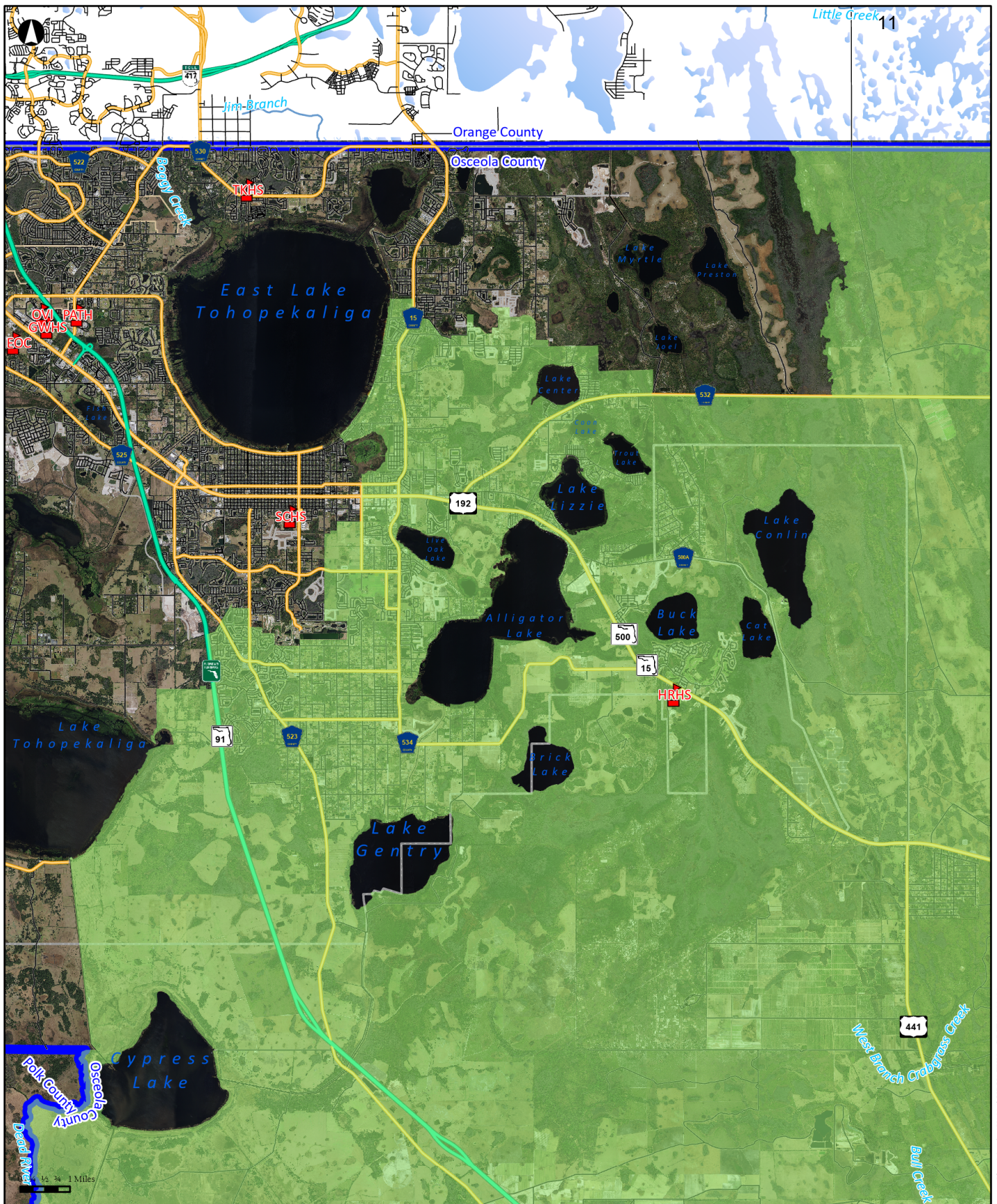
Choice in and out based on current calculations

Assumes all Choice students in redistricting area continue to attend Choice school

Does not account for future redistricting which may occur for the 2024/25 or 2025/26 school years

There is the potential of a new Charter school to open for the 2024/25 school year within the NCES, NCMS, and HRHS attendance zones, this has the potential to change projections students in the Narcoossee Rd, Harmony Community, and Hickory Rd areas

High School "AAA" Nova Rd planned to open for SY2026/27 total boundary to be determined



**Alternate Plan
Proposed Harmony High
Attendance Zone
SY2023/24**

Drafts redistricting proposed for SY2425



Planning Services Department
The School District of Osceola County, FL



Schools

Harmony High

Tohopekaliga High

Draft_HRHStoTKHS

Disclaimer: All data, information, and maps are provided "as is" without any warranty or representation of accuracy, timeliness, or completeness. The School District of Osceola County, Florida (the "School District") cannot accept any responsibility for errors, omissions, or positional accuracy. The School District specifically disclaims any warranty, either express or implied, including, without limitation, the implied warranties of merchantability and fitness for a particular purpose. The burden of determining accuracy, timeliness, merchantability, and fitness for a particular use rests solely on the requestor, and the requestor assumes all risk as to quality and performance. In no event will the School District or its staff be liable for any direct, indirect, incidental, special, consequential, or other damages, including, without limitation, loss of profit, arising out of the use of the data, information, and maps even if the School District has been advised of the possibility of such damages. The requestor acknowledges and accepts the limitations of the data, information, and maps, including, without limitation, the fact that the data, information, and maps are dynamic and are in a constant state of maintenance, correction, and update.



**Alternate Plan
Proposed Tohopekaliga High
Attendance Zone
SY2023/24**

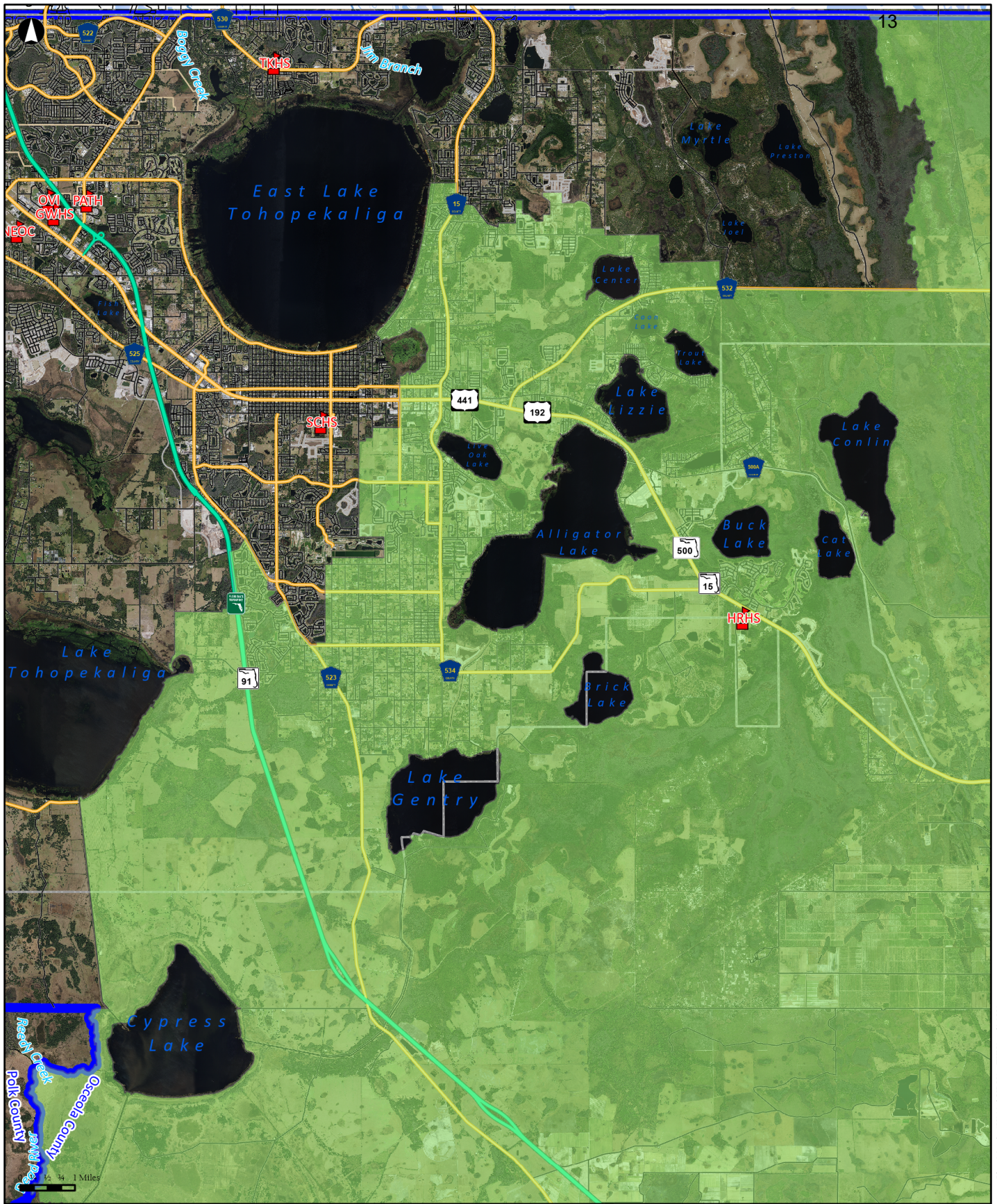
Draft redistricting proposed for SY2425



Planning Services Department
The School District of Osceola County, FL

- Schools**
- Harmony High**
- Tohopekaliga High**
- Draft_HRHS to TKHS**

Disclaimer: All data, information, and maps are provided "as is" without any warranty or representation of accuracy, timeliness, or completeness. The School District of Osceola County, Florida (the "School District") cannot accept any responsibility for errors, omissions, or positional accuracy. The School District specifically disclaims any warranty, either express or implied, including, without limitation, the implied warranties of merchantability and fitness for a particular purpose. The burden of determining accuracy, timeliness, merchantability, and fitness for a particular use rests solely on the requestor, and the requestor assumes all risk as to quality and performance. In no event will the School District or its staff be liable for any direct, indirect, incidental, special, consequential, or other damages, including, without limitation, loss of profit, arising out of the use of the data, information, and maps even if the School District has been advised of the possibility of such damages. The requestor acknowledges and accepts the limitations of the data, information, and maps, including, without limitation, the fact that the data, information, and maps are dynamic and are in a constant state of maintenance, correction, and update.


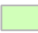
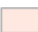


**Proposed Harmony High
Attendance Zone
SY2024/25**

Drafts redistricting proposed for SY2425



Planning Services Department
The School District of Osceola County, FL

-  Schools
-  Harmony High
-  St Cloud High

Disclaimer: All data, information, and maps are provided "as is" without any warranty or representation of accuracy, timeliness, or completeness. The School District of Osceola County, Florida (the "School District") cannot accept any responsibility for errors, omissions, or positional accuracy. The School District specifically disclaims any warranty, either express or implied, including, without limitation, the implied warranties of merchantability and fitness for a particular purpose. The burden of determining accuracy, timeliness, merchantability, and fitness for a particular use rests solely on the requestor, and the requestor assumes all risk as to quality and performance. In no event will the School District or its staff be liable for any direct, indirect, incidental, special, consequential, or other damages, including, without limitation, loss of profit, arising out of the use of the data, information, and maps even if the School District has been advised of the possibility of such damages. The requestor acknowledges and accepts the limitations of the data, information, and maps, including, without limitation, the fact that the data, information, and maps are dynamic and are in a constant state of maintenance, correction, and update.


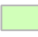



**Proposed St. Cloud High
Attendance Zone
SY2024/25**

Draft redistricting proposed for SY2425



Planning Services Department
The School District of Osceola County, FL

-  Schools
-  Harmony High
-  St Cloud High

Disclaimer: All data, information, and maps are provided "as is" without any warranty or representation of accuracy, timeliness, or completeness. The School District of Osceola County, Florida (the "School District") cannot accept any responsibility for errors, omissions, or positional accuracy. The School District specifically disclaims any warranty, either express or implied, including, without limitation, the implied warranties of merchantability and fitness for a particular purpose. The burden of determining accuracy, timeliness, merchantability, and fitness for a particular use rests solely on the requestor, and the requestor assumes all risk as to quality and performance. In no event will the School District or its staff be liable for any direct, indirect, incidental, special, consequential, or other damages, including, without limitation, loss of profit, arising out of the use of the data, information, and maps even if the School District has been advised of the possibility of such damages. The requestor acknowledges and accepts the limitations of the data, information, and maps, including, without limitation, the fact that the data, information, and maps are dynamic and are in a constant state of maintenance, correction, and update.

***Proposed Streets to Transfer
from Harmony High School
to Tohopekalia High School
2023/2024***

<i>Alternate Plan Streets to Transfer from Harmony High to Tohopekaliga High</i>		
ABSHER LN	FOX HEDGE LN	PADDLE RD
ABSHER RD	GRASSLAND AVE	PERUGIA LN
APPENINE LOOP EAST	GREENERY LN	PIADA LN
APPENINE LOOP WEST	HICKORY DOWNS WAY	PINE PRESERVE CT
ARBORETUM ST	HONEYBELL WAY	PINES END PL
BARNSTORM WAY	JACK BRACK RD	PLAYA DEL SOL LN
BEGGS RD	JONES RD	POLARIS DR
BLUE POND WAY	JOURNEY PL	PROSPECT TRL
BOOTLACE WAY	LAZIO ST	QUEST ST
CAMILLA ST	LITTLE LN	RAMBLING RD
CANTANIA CT	LONE PALM WAY	RANGER DR
CEDAR POINT WAY	LUISA CT	RAVENA AVE WEST
CHASETREE LN	MARSH VIEW ST	RAVENA AVE EAST
CHERRY BLOSSOM LOOP	MCMICHAEL RD	RIMINI DR
CIRCLE ROCK WAY	MIRAGE PL	RIVER CREEK LN
CITRUS GROVE CT	MOSSY OAK RD	ROVER WAY
CLIFF WAY	N NARCOOSSEE RD	RUBY ROSE LN
COSTA DEL SOL DR	NARCOOSSEE DEL SOL BLVD	SABAL DR
CUTKE RD	NATURE VIEW RD	SABLE GLEN DR
CYRILS DR	ODYSSEY TRCE	SANDY SPRINGS CT
DAYPACK LN	ORANGE HILL ST	SASSARI AVE
DEL WEBB BLVD	ORCHARD VIEW ST	SCOUT ST
DOUGLAS FIR DR	OUTBACK RD	SHIMMERING SHORES LN
FLATWOOD ST	OUTBACK RD WEST	SIBONEY ST

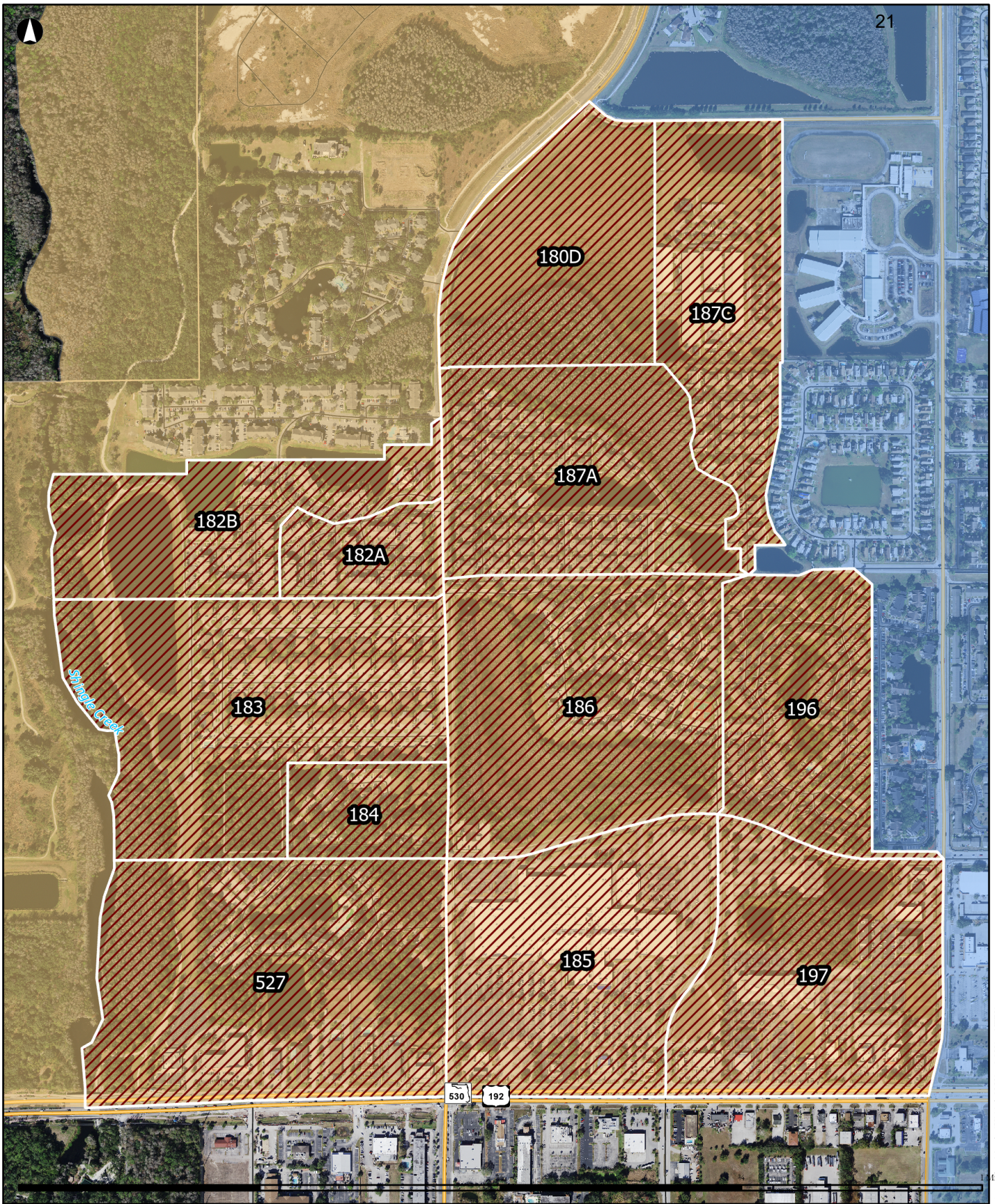
<i>Alternate Plan Streets to Transfer from Harmony High to Tohopekaliga High cont.</i>		
SICILY DR	TRACIE WAY	WALLIS LN
SILO DR	TRAILBLAZE BND	WAYFARER CT
SILVERBELL TRL	TRAILS END CT	WHITE BLOSSOM CIR
SORRENTO BLVD EAST	UMBRIA LN	WIGGINS RD
SORRENTO BLVD WEST	UNDERWOOD AVE	WINDING PATH WAY
SPRINGER ST	VANGUARD CT	WYCLIFFE WAY
SUGARBUSH ST	VENTURE WAY	WYNELL ST
TIBER WAY	VICENZA ST	ZUNI RD
TIMBER MEADOW WAY	VILLA ROSA AVE	
TIMBERLAND AVE	VOYAGER AVE	

***Proposed Streets to Transfer
from Harmony High School
to St. Cloud High School
2024/2025***

Streets to Transfer from Harmony High to St. Cloud High

ALLEGRA CIR	EDGEHILL CT	OPAL CIR
ANN ARBOR CT	ELBIB DR	PINE TREE DR
ARROYO CIR	EXCALIBUR CT	PORTOFINO VISTA BLVD
BAJA DR	GATOR BAY LN	RENAISSANCE CT
BAY VIEW CT	GATOR BAY CREEK BLVD	RICHMONT LOOP
BAYVIEW LN	GEORGETOWN CT	SAN ISIDRO CIR
BELLWOOD WAY	GINA ANNE CT	SAWGRASS CREEK CIR
BELLWOOD CT	GISELLE CT	SEDFIELD CT
BLUE JAY CT	GLENWICK CT	SEDFIELD DR
CABO ROJO DR	GLENWICK DR	SEVEN OAKS DR
CAMELOT BLVD	GUENEVERE CT	SIR LANCELOT CIR
CANOE CIR	HEATHGATE DR	SOARING DR
CANOE CREEK RD	HEATHGATE CT	SUMMER RAYE CT
CAYMAN COVE CIR	HILLTOP PL	SWEETGUM ST
CHANNING DR	INTERIOR ST	SWEETHEART CT
CIALELLA PASS	KALEIGH CT	SWEETWATER BLVD
CLEAR BROOK PL	KELSEY LN	TALEGA DR
COUNTRYSIDE VIEW DR	KYLE DR	TIKIMBER WAY
COUNTRYSIDE VIEW CT	LEBA LN	TIMBER CREST DR
COVINGTON DR	MERLIN WAY	TRUJILO LN
CREEKWAY ST	MICAH CT	VEGA CREEK DR
CROSSING CREEK BLVD	MOCA DR	WHALEYS CANOE DR
DEATA CT	NEWBERRY WAY	WOOD WIND PL
DOVERSHIRE CT	NOAH CIR	WOODBINE DR
EAGLE LANDING DR	OLDE KINGS CT	
ALLEGRA CIR	OLDE QUEENS CT	

***2023/2024 Proposed Changes to
Celebration High and Osceola High
Schools' Attendance Zone
Boundaries***



**Proposed Redistricting Area
CLHS to OCHS area zoom**

Draft redistricting proposed for SY2324



Planning Services Department
The School District of Osceola County, FL

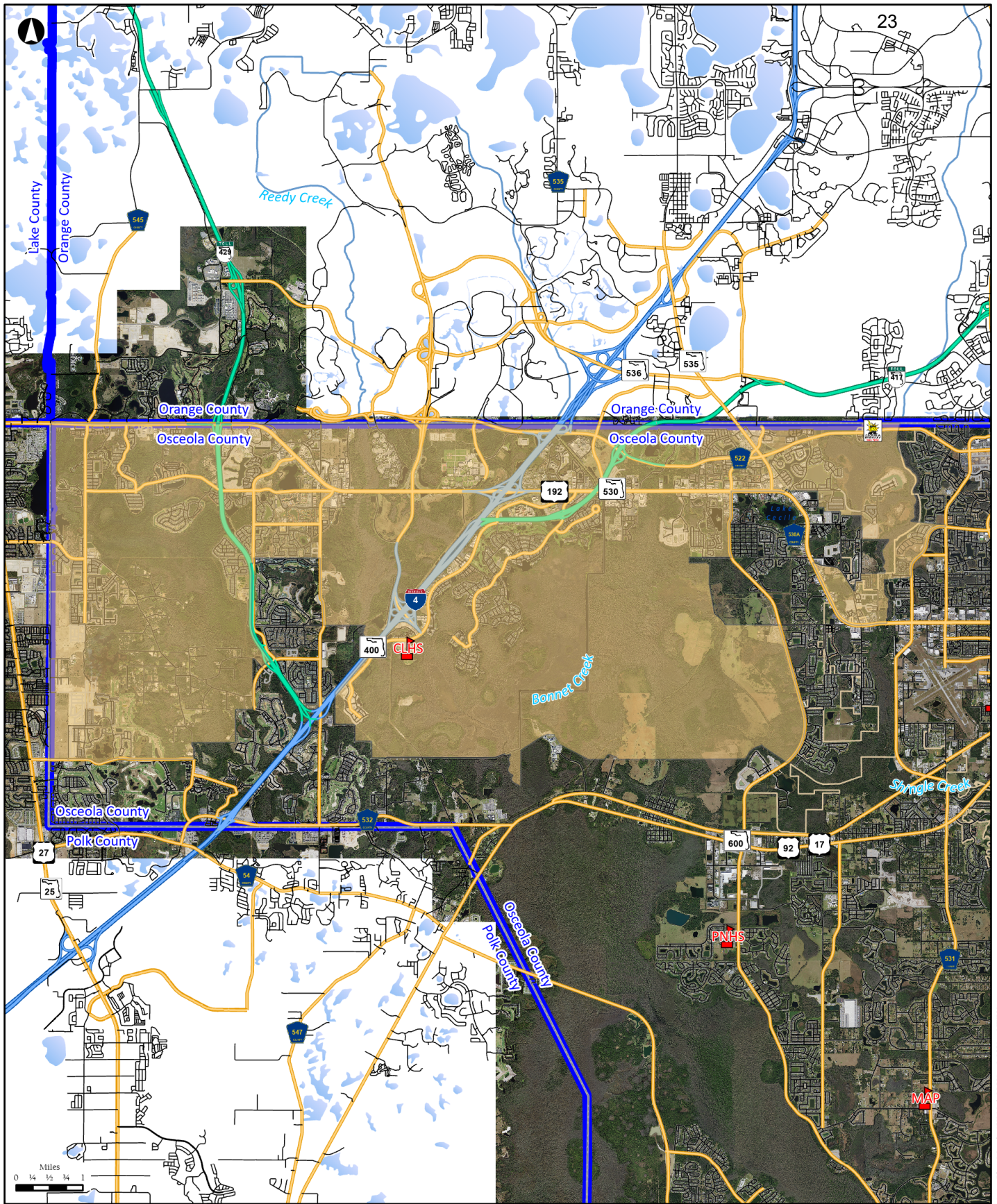
- Celebration High
- Osceola High

Disclaimer: All data, information, and maps are provided "as is" without any warranty or representation of accuracy, timeliness, or completeness. The School District of Osceola County, Florida (the "School District") cannot accept any responsibility for errors, omissions, or positional accuracy. The School District specifically disclaims any warranty, either express or implied, including, without limitation, the implied warranties of merchantability and fitness for a particular purpose. The burden of determining accuracy, timeliness, merchantability, and fitness for a particular use rests solely on the requestor, and the requestor assumes all risk as to quality and performance. In no event will the School District or its staff be liable for any direct, indirect, incidental, special, consequential, or other damages, including, without limitation, loss of profit, arising out of the use of the data, information, and maps even if the School District has been advised of the possibility of such damages. The requestor acknowledges and accepts the limitations of the data, information, and maps, including, without limitation, the fact that the data, information, and maps are dynamic and are in a constant state of maintenance, correction, and update.

CLHS to OCHS	School	Plan Area	Year	Grades 9-12	CHOICE Sending	CHOICE Receiving	NET TOTAL 9-12	Functional Capacity	Functional Utilization	Functional Capacity W/ Relocatable	Functional Utilization W/ Relocatable
SB Member: 1 <i>265 Students Projected to move in Study Areas</i>	CLHS	1a	2023/2024	2,803	280	290	2,813	2,677	105%	2,772	101%
	CLHS	1a	2023/2024	2,537	280	290	2,547	2,677	95%	2,772	92%
	CLHS	1a	2024/2025	2,724	296	290	2,718	2,677	102%	2,772	98%
	CLHS	1a	2025/2026	2,884	312	290	2,862	2,677	107%	2,772	103%
	CLHS	1a	2026/2027	2,859	312	290	2,837	2,677	106%	2,772	102%
CLHS to OCHS	School	Plan Area	Year	Grades 9-12	CHOICE Sending	CHOICE Receiving	NET TOTAL 9-12	Functional Capacity	Functional Utilization	Functional Capacity W/ Relocatable	Functional Utilization W/ Relocatable
SB Member: 1	OCHS	3	2023/2024	3,034	934	344	2,444	2,478	99%	2,811	87%
	OCHS	3	2023/2024	3,298	934	344	2,708	2,478	109%	2,811	96%
	OCHS	3	2024/2025	3,329	981	344	2,692	2,478	109%	2,811	96%
	OCHS	3	2025/2026	3,342	1,068	344	2,618	2,478	106%	2,811	93%
	OCHS	3	2026/2027	3,298	1,068	344	2,574	2,478	104%	2,811	92%

Notes:

Choice in and out based on current calculations
 Assumes all students in redistricting area go to the new school
 Does not account for future redistricting






**Proposed Attendance Boundary
Celebration High School
SY2023/24**

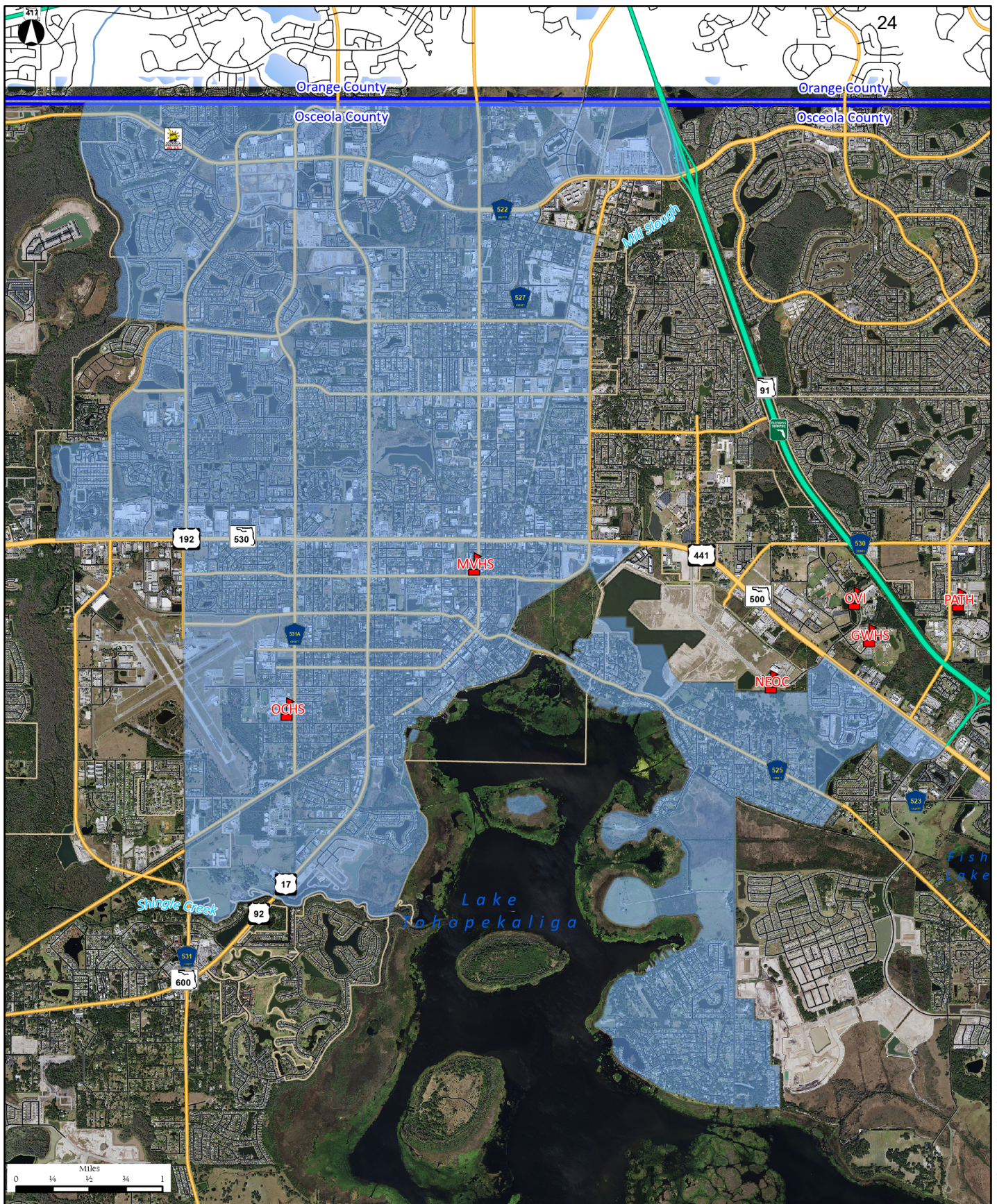
Draft redistricting proposed for SY23/24



Planning Services Department
The School District of Osceola County, FL

-  **Schools**
-  **Celebration High**
-  **Osceola High**

Disclaimer: All data, information, and maps are provided "as is" without any warranty or representation of accuracy, timeliness, or completeness. The School District of Osceola County, Florida (the "School District") cannot accept any responsibility for errors, omissions, or positional accuracy. The School District specifically disclaims any warranty, either express or implied, including, without limitation, the implied warranties of merchantability and fitness for a particular purpose. The burden of determining accuracy, timeliness, merchantability, and fitness for a particular use rests solely on the requestor, and the requestor assumes all risk as to quality and performance. In no event will the School District or its staff be liable for any direct, indirect, incidental, special, consequential, or other damages, including, without limitation, loss of profit, arising out of the use of the data, information, and maps even if the School District has been advised of the possibility of such damages. The requestor acknowledges and accepts the limitations of the data, information, and maps, including, without limitation, the fact that the data, information, and maps are dynamic and are in a constant state of maintenance, correction, and update.


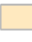



**Proposed Attendance Boundary
Osceola High School
SY2023/24**

Draft restricting proposed for SY23/24



Planning Services Department
The School District of Osceola County, FL

-  **Schools**
-  **Celebration High**
-  **Osceola High**

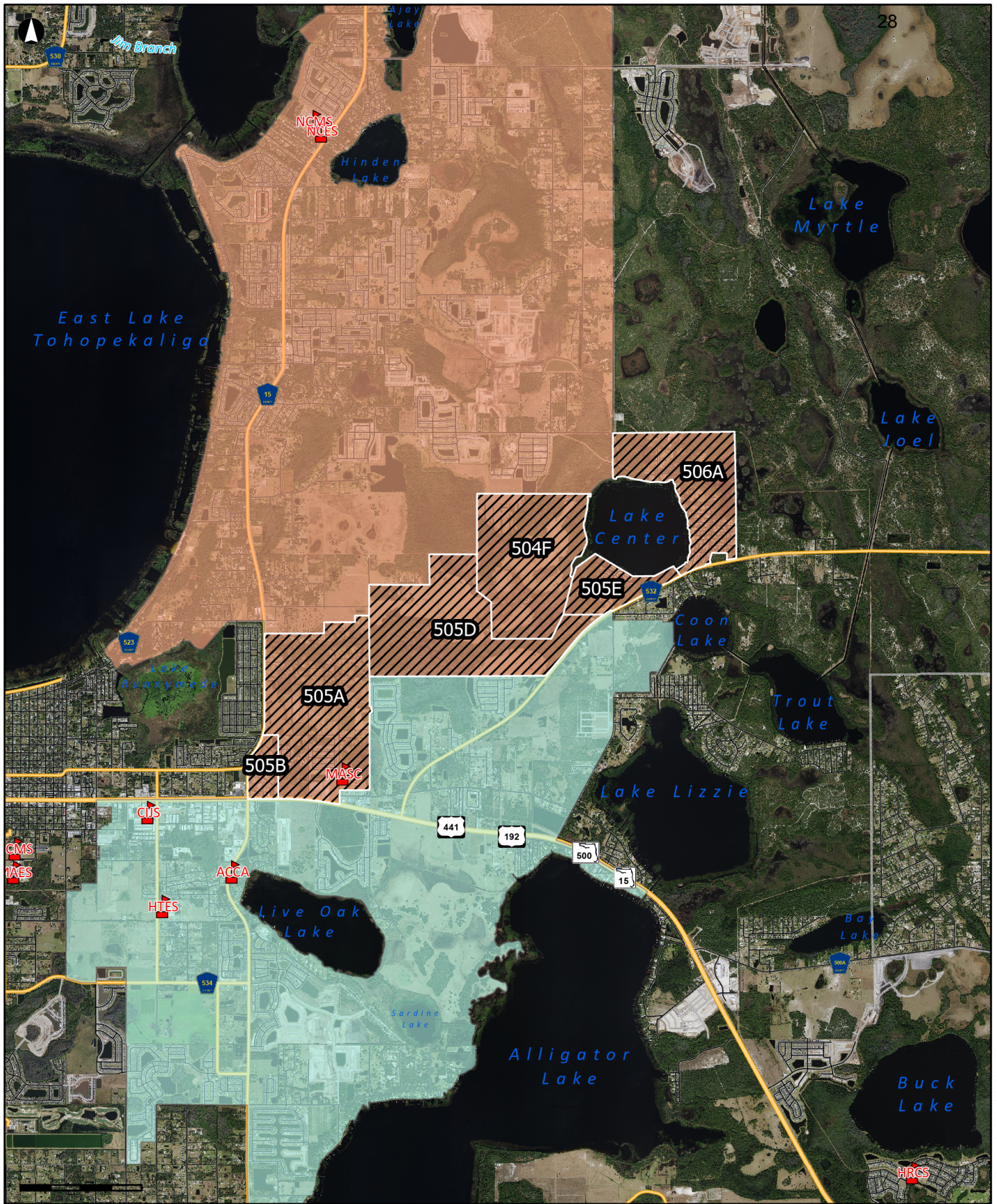
Disclaimer: All data, information, and maps are provided "as is" without any warranty or representation of accuracy, timeliness, or completeness. The School District of Osceola County, Florida (the "School District") cannot accept any responsibility for errors, omissions, or positional accuracy. The School District specifically disclaims any warranty, either express or implied, including, without limitation, the implied warranties of merchantability and fitness for a particular purpose. The burden of determining accuracy, timeliness, merchantability, and fitness for a particular use rests solely on the requestor, and the requestor assumes all risk as to quality and performance. In no event will the School District or its staff be liable for any direct, indirect, incidental, special, consequential, or other damages, including, without limitation, loss of profit, arising out of the use of the data, information, and maps even if the School District has been advised of the possibility of such damages. The requestor acknowledges and accepts the limitations of the data, information, and maps, including, without limitation, the fact that the data, information, and maps are dynamic and are in a constant state of maintenance, correction, and update.

***Proposed Streets to Transfer
from Celebration High School
to Osceola High School
2023/2024***

Streets to Transfer from Celebration High to Osceola High

ANTIGUA PL	N HOAGLAND BLVD
ARMSTRONG BLVD	JAMAICA RUN LN
BAY CLUB CIR	KEY WEST CT
BERMUDA WAY LN	NAUTICAL WAY
BONAIRE BLVD	OAK CANOPY CT
BOWLINE CIR	SAN CRISTOBOLO DR
BREAKWATER WAY	SAN GALLO DR
W CARROLL ST	SAN SEBASTIAN DR
CAYMAN CT	SAN VITAL DR
CLUB CT	SAN VITTORINO CIR
W COLUMBIA AVE	SAN ZANOBI DR
CORSAIR AVE	SANTA MARIA DR
COZUMEL CIR	SOUTHERN OAKS CT
CROWS NEST DR	SPITFIRE AVE
ENCHANTED OAKS CIR	ST KITTS CT
FLYING FORTRESS AVE	TROPICAL ISLE BLVD
FOXHALL CIR	VENETIAN BAY DR
GALLEY CT	W VINE ST
GRAND CAYMAN CT	WAR BIRD BLVD
HIDDEN COVE PL	WESLEY CREEKSIDE DR
HIDEAWAY BAY BLVD	

***2023/2024 Proposed Changes to
Hickory Tree Elementary and
Narcoossee Elementary
Schools' Attendance Zone
Boundaries***


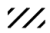
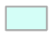
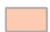


Proposed Redistricting Area
NCES to HTES

Draft redistricting proposed for SY2324



Planning Services Department
The School District of Osceola County, FL

-  Schools
-  Draft_NCStoHTES
-  Hickory Tree Elementary
-  Narcoossee Elementary

Disclaimer: All data, information, and maps are provided "as is" without any warranty or representation of accuracy, timeliness, or completeness. The School District of Osceola County, Florida (the "School District") cannot accept any responsibility for errors, omissions, or positional accuracy. The School District specifically disclaims any warranty, either express or implied, including, without limitation, the implied warranties of merchantability and fitness for a particular purpose. The burden of determining accuracy, timeliness, merchantability, and fitness for a particular use rests solely on the requestor, and the requestor assumes all risk as to quality and performance. In no event will the School District or its staff be liable for any direct, indirect, incidental, special, consequential, or other damages, including, without limitation, loss of profit, arising out of the use of the data, information, and maps even if the School District has been advised of the possibility of such damages. The requestor acknowledges and accepts the limitations of the data, information, and maps, including, without limitation, the fact that the data, information, and maps are dynamic and are in a constant state of maintenance, correction, and update.

NCES to HTES	School	Plan Area	Year	Grades K-5	CHOICE Sending	CHOICE Receiving	NET TOTAL K5	Functional Capacity	Functional Utilization	Functional Capacity W/ Relocatable	Functional Utilization W/ Relocatable
SB Member: 5 <i>Sunbridge to Open SY2425 move 372 students</i>	NCES	5	2023/2024	1,802	316	152	1,638	984	166%	1,516	108%
	NCES	5	2023/2024	1,586	312	148	1,422	984	145%	1,516	94%
	NCES	5	2024/2025	1,495	329	148	1,314	984	134%	1,516	87%
	NCES	5	2025/2026	1,685	334	148	1,499	984	152%	1,516	99%
	NCES	5	2026/2027	1,976	333	148	1,791	984	182%	1,516	118%
NCES to HTES	School	Plan Area	Year	TOTAL K-8	CHOICE Sending	CHOICE Receiving	NET TOTAL K5	Functional Capacity	Functional Utilization	Functional Capacity W/ Relocatable	Functional Utilization W/ Relocatable
SB Member: 5 <i>Roan Bridge to Open SY2526 move 394 students</i>	HTES	9	2023/2024	1,111	403	159	867	955	91%	1,153	75%
	HTES	9	2023/2024	1,277	471	163	969	955	101%	1,153	84%
	HTES	9	2024/2025	1,394	468	163	1,089	955	114%	1,153	94%
	HTES	9	2025/2026	1,147	457	163	853	955	89%	1,153	74%
	HTES	9	2026/2027	1,323	457	163	1,029	955	108%	1,153	89%

Notes:

Choice in and out based on current calculations

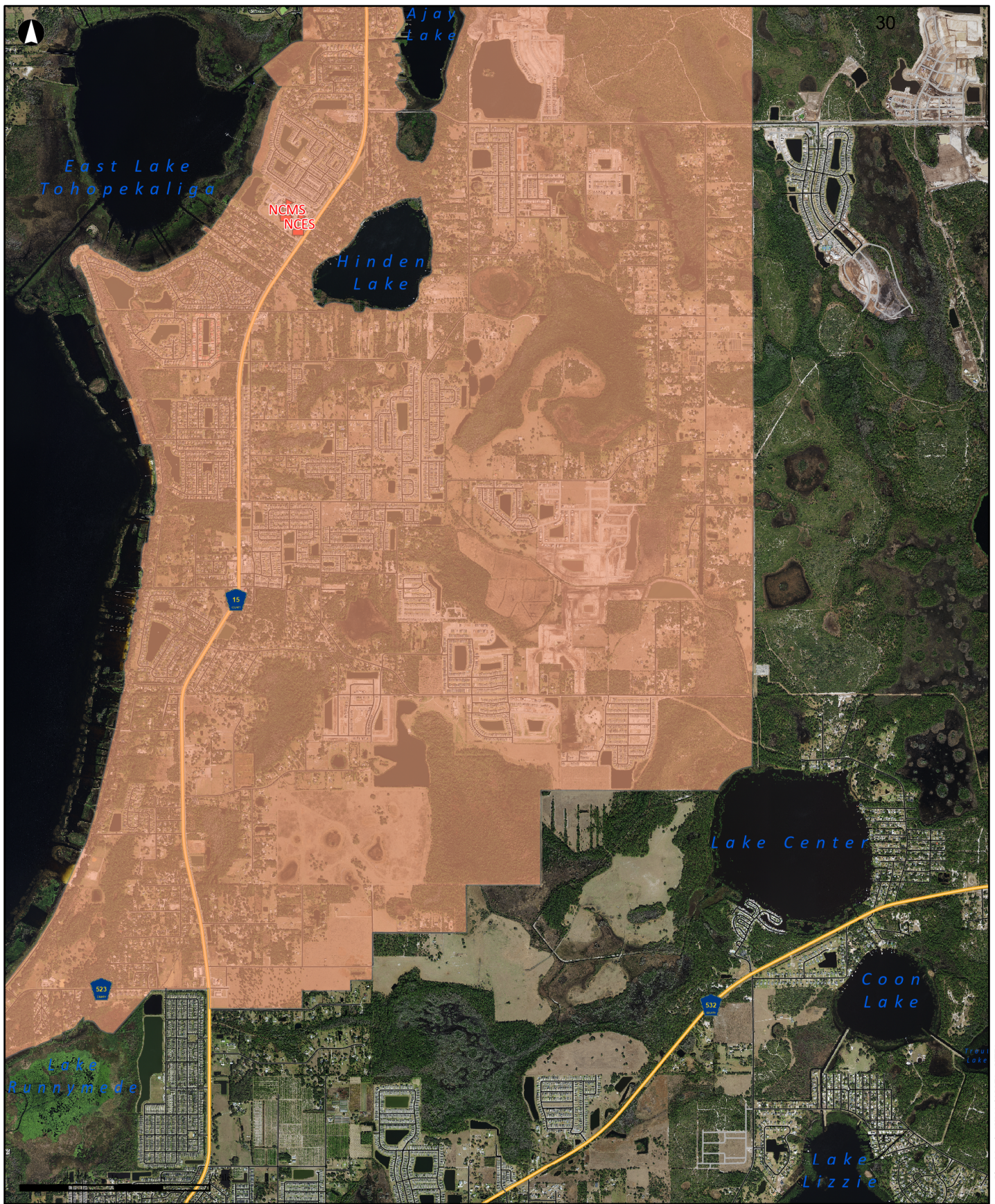
Assumes all students in redistricting area go to the new school

Assumes 6 relocatable units placed at HTES prior to the 2023/24 school year

Does not account for future redistricting which may occur for the 2024/25 or 2025/26 school years

There is the potential of a new Charter school to open for the 2024/25 school year within the NCES, NCMS, and HRHS attendance zones, this has the potential to change projections students in the Narcoossee Rd, Harmony Community, and Hickory Rd areas

Draft attendance boundaries for Sunbridge and Roanbridge have not been finalized, therefore, total students effected by school openings may change


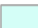
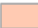


Proposed Attendance Boundary
Narcossee Elementary
SY2023/24

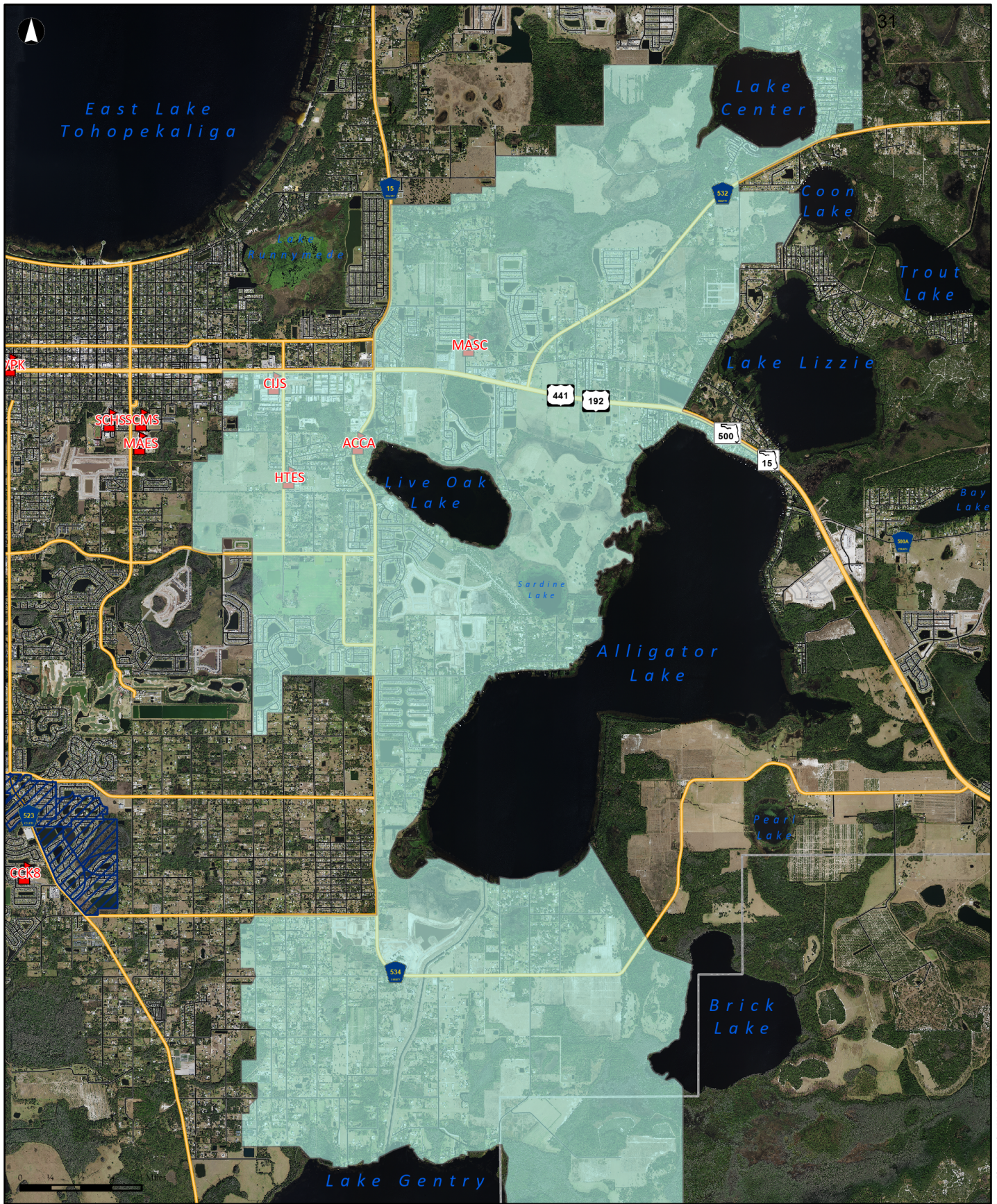
Draft redistricting proposed for SY23/24



Planning Services Department
 The School District of Osceola County, FL

-  **Schools**
-  **Hickory Tree Elementary**
-  **Narcossee Elementary**

Disclaimer: All data, information, and maps are provided "as is" without any warranty or representation of accuracy, timeliness, or completeness. The School District of Osceola County, Florida (the "School District") cannot accept any responsibility for errors, omissions, or positional accuracy. The School District specifically disclaims any warranty, either express or implied, including, without limitation, the implied warranties of merchantability and fitness for a particular purpose. The burden of determining accuracy, timeliness, merchantability, and fitness for a particular use rests solely on the requestor, and the requestor assumes all risk as to quality and performance. In no event will the School District or its staff be liable for any direct, indirect, incidental, special, consequential, or other damages, including, without limitation, loss of profit, arising out of the use of the data, information, and maps even if the School District has been advised of the possibility of such damages. The requestor acknowledges and accepts the limitations of the data, information, and maps, including, without limitation, the fact that the data, information, and maps are dynamic and are in a constant state of maintenance, correction, and update.



**Proposed Attendance Boundary
Hickory Tree Elementary
SY2023/24**

Draft redistricting proposed for SY2324



Planning Services Department
The School District of Osceola County, FL



Schools



Hickory Tree Elementary



Narcossee Elementary

Disclaimer: All data, information, and maps are provided "as is" without any warranty or representation of accuracy, timeliness, or completeness. The School District of Osceola County, Florida (the "School District") cannot accept any responsibility for errors, omissions, or positional accuracy. The School District specifically disclaims any warranty, either express or implied, including, without limitation, the implied warranties of merchantability and fitness for a particular purpose. The burden of determining accuracy, timeliness, merchantability, and fitness for a particular use rests solely on the requestor, and the requestor assumes all risk as to quality and performance. In no event will the School District or its staff be liable for any direct, indirect, incidental, special, consequential, or other damages, including, without limitation, loss of profit, arising out of the use of the data, information, and maps even if the School District has been advised of the possibility of such damages. The requestor acknowledges and accepts the limitations of the data, information, and maps, including, without limitation, the fact that the data, information, and maps are dynamic and are in a constant state of maintenance, correction, and update.

***Proposed Streets to Transfer
from Narcoossee Elementary
to Hickory Tree Elementary
2023/2024***

<i>Streets to Transfer from Narcoossee Elementary to Hickory Tree Elementary</i>		
--	--	--

ADAM ST	GENESIS CT	PARKWAY EAST
APPLE ST	GOLD CREST DR	PERCH DR
ASHTON PARK PL	GOLDEN RIVER LN	PINE ISLAND DR SOUTH
ASHTON PARK BLVD	GREEN DRAGON DR	PUFFIN RD
BENNETT CT	HANSOM RD	RAIN LILY PL
BERNETTI PL	HARKLEY RUNYAN RD	RIB AVE
BLUEPOINT ST	HAYWOOD RUFFIN RD	RIVER CREST AVE
BONAVENTURE DR	E IRLO BRONSON MEM HWY	RIVERSIDE WAY
BONNIE CT	JESS CT	ROPER RD
CREATION ST	JUDITH CT	SERPENT CT
DARYL CT	K C DURHAM RD	SHIPWRECK LN
DEEPWATER DR	LAGUNA CIR	ST FRANCIS LN
DIANE CT	LILLIAN LEE RD	STAR RUBY AVE
EDEN DR	MAINSAIL LN	STARBOARD DR
EVE ST	MAURY RD	TEMPTATION CT
FALL ST	S NARCOOSSEE RD	
FIDDLEWOOD WAY	NEWTON CT	
FIG LEAF ST	NORA TYSON RD	
FOXTAIL FERN WAY	NORTH SHORE DR	